



Supported Lodgings ExTra Beds

Ros Arscott and Diane Rae

Supported Lodgings ExTra Beds

About

Young Devon was asked by Chris Stocks to provide a proposal for Supported Lodgings emergency beds

Contacts

ros.arscott@youngdevon.org
diane.rae@youngdevon.org

Young Devon Central Office,
10 Erme Road, Ivybridge, Devon PL21 0AB

Telephone: 01752 691 511 | **www.youngdevon.org**

Twitter: @youngdevon

Facebook: /youngdevonofficial

Instagram: youngdevonofficial

Young Devon is registered in England as a company limited by guarantee and a charity. Charity No: 1057949 Company No: 3240655.

Registered Address: Central Office, 10 Erme Road, Ivybridge, PL21 0AB

Supported Lodgings ExTra Beds

Executive Summary

Due to a reduction in the access to emergency bed spaces for young people aged 16 and 17 years old Young Devon were asked to provide a proposal for consideration by ECC and TDC.

The proposal is to offer 5 emergency bed spaces for an initial period of 72 hrs. It is recognised that Supported Lodgings is appropriate accommodation for 16 and 17 year olds in a housing crisis as the use of Bed and Breakfast accommodation for this vulnerable group is not an option.

This service would support the Homeless Prevention teams commissioned by ECC and TDC.

Supported Lodgings ExTra Beds

Contents

Section 1 Procedure	5
Section 2 Agreement for provision of emergency beds	7

Supported Lodgings ExTra Beds

Section 1

Young Devon Supported Lodgings will offer 5 emergency 72 hour bed spaces for 16 to 17 year olds in Exeter and Teignbridge.

Combined Hub form will be completed by the homeless prevention teams and will include a risk assessment and risk management plan were needed. This will act as a referral to Young Devon Supported Lodgings no placement can be made until the referral has been received.

Prior to any placement being made we will request the emergency funding agreement to be emailed by TDC or ECC Housing Manager. We will then seek to provide initial respite via 72 hour emergency Supported Lodgings. This will give our HPW team the time to work on the pathway plan working towards a return home or remain within the family/friend network where safe to do so. HPW to follow process in Section 3. Before placement can commence it is essential that relevant paperwork are completed including offer letter and HB Form. For Exeter complete Short Claim form and email to Gillian.littley@exeter.gov.uk and Paul.callister@exeter.gov.uk. For Teignbridge please complete online application and email Tony Mansour with confirmation of placement.

The Supported Lodgings team will identify an appropriate host and area where risk assessment allows. A support worker will transport the young person and complete a placement agreement with the hosts and young person. Placements can be made within office hours as the HPW will need to see the young person face to face. We recognise that it can take time to complete needs and risk assessments and this may require the team to work into the early evening. We will not be able to take emergency referrals out of hours due to the placements being in a home environment. However we are keen to set up a system to do this in partnership with the council.

Supported Lodgings ExTra Beds

The young person will work with the Homeless prevention team over the following 3 (working) days

The Young Person and worker will put together a realistic pathway plan (include family where possible). This should include family mediation and a range of support, signposting or advocacy.

We will work with the family enabling them to be part of the solution supporting the young person with access to basic clothing items and transport. If this is not the case we will work with social care to support immediate need e.g. Food, basic clothing and transport under sec 17

When the young person returns home and the HPW has identified ongoing support required for the young person or family we will offer a referral to Early Help via an interim Early help form or DAF. HPW to complete relevant functions on CDP to ensure that Not Homeless Decision is made (Training to be provided by Tony Mansour)

Where a return to home is still not an option, the HPW will start the process with a referral to MASH. HPW to also contact Homelessness Officer for relevant Authority and set up Homelessness Interview. They will then work with Social care and support a timely joint initial assessment with a Social worker (within 10 working days). As a result we will ensure that the young person is then presented at HPP for accommodation options or via the Social Worker for Brokerage options. We will work closely with supported accommodation providers in accessing temporary accommodation voids where ever possible.

Supported Lodgings will invoice TDC or ECC weekly ensuring that they can pay hosts families promptly. HPWs will complete any paperwork required by the TDC or ECC and ensure this is promptly returned.

Supported Lodgings ExTra Beds

Section 2

Agreement for the provision of Supported Lodgings



This agreement is for the purchase of Emergency accommodation and/or support in accordance with the costings set out below.

AGENCY DETAILS:	NAME & ADDRESS OF PROVIDER
	Young Devon 10 Erme Road Ivybridge Devon PL21 OAB

Name & Address of Host:

Young Person's Details	
Case No:	DOB:
Surname:	Forenames:
Gender:	

Date of Commencement:

Services provided: To provide emergency accommodation for a maximum of 10 days.



Supported Lodgings ExTra Beds

Payment Schedule:

Payment to be received by BACS bank transfer into the nominated bank account

Bank:	
Sort Code:	
Account No:	
Purchase Order No:	

Accommodation Charges Payable to Young Devon for single Night Emergency Bed:

Description of one off fee	Amount
Initial Set up cost per placement	£42.41

Description Daily Costs	Amount
Accommodation & Placement Service Charge	£45.00
Management & Administration	£16.58
Total Daily Cost (Accommodation/Administration)	£61.58

The referring agency agrees to be liable for the Housing Benefit element. All costs to be agreed and signed off by the Senior Housing Officer before placement commences.

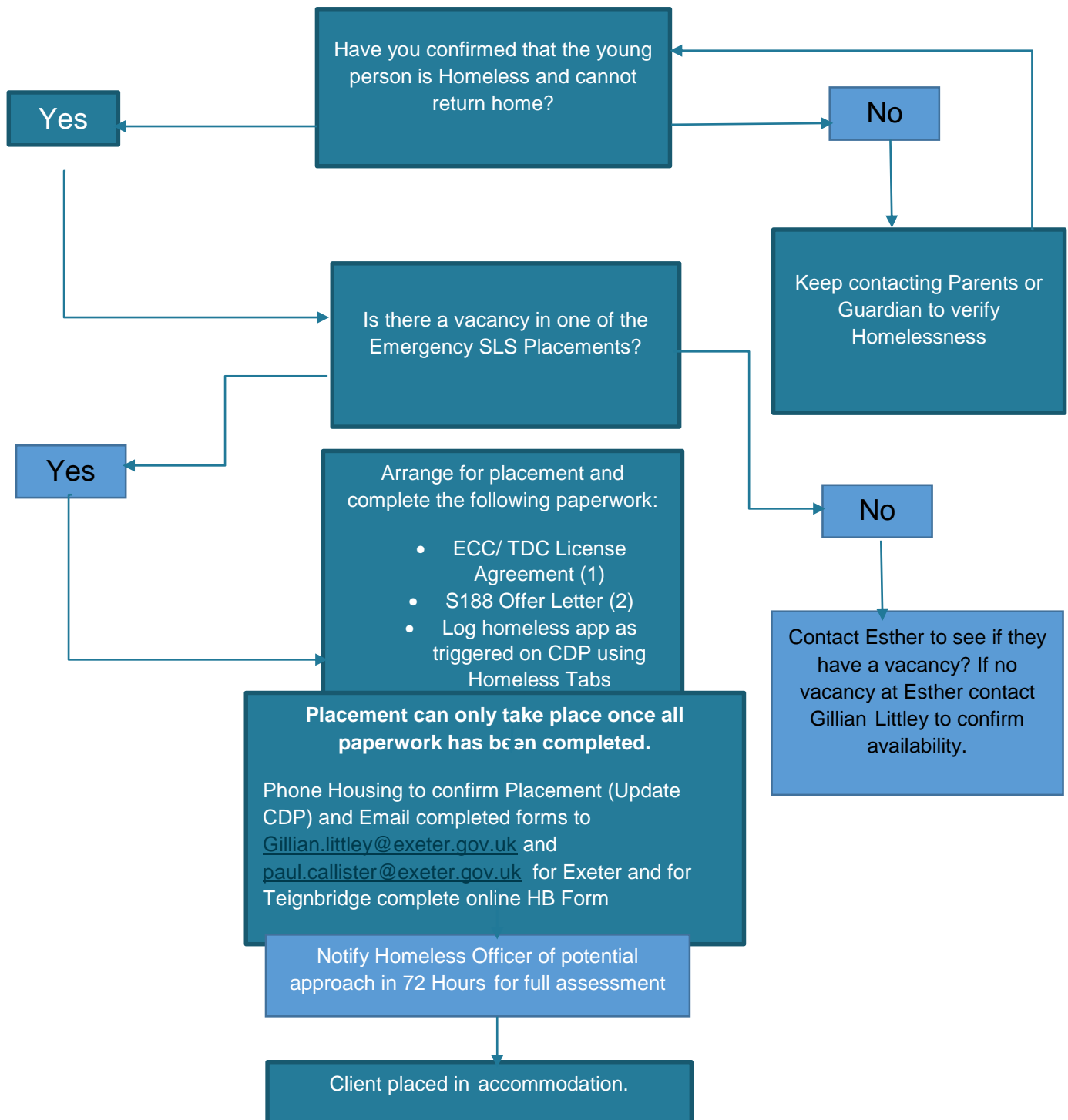
Mileage will be charged at .35p per mile for any placement over a 14 mile distance from the presenting YES Centre.

Position and Date:
Agreement of [Local Authority/Department]
Name of signatory:
Signed and dated:

Supported Lodgings ExTra Beds

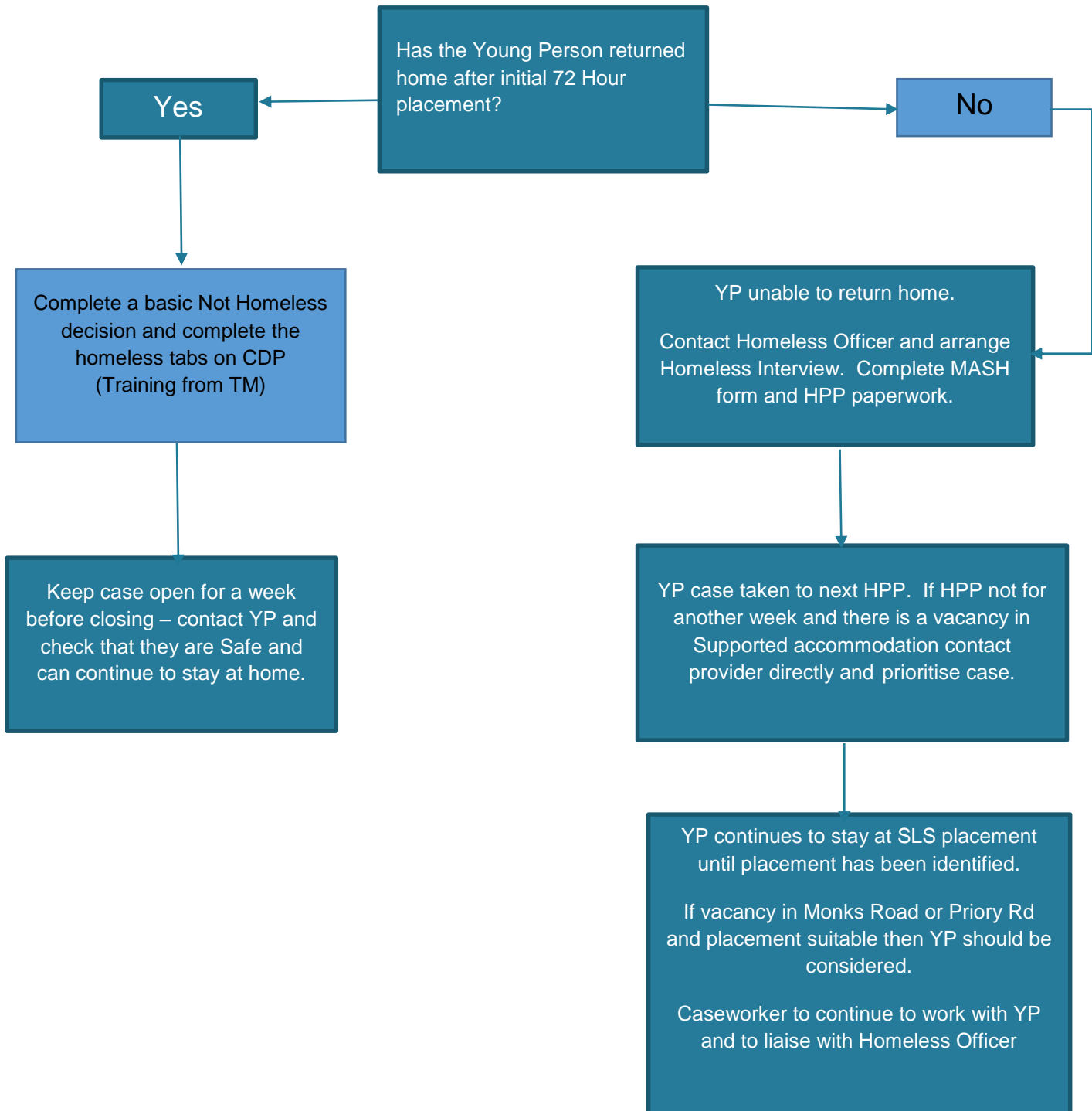
Section 3

Process for placement of 16 and 17 Year olds in Emergency Accommodation



Process for placement of 16 and 17 Year olds in Emergency Accommodation (72 Hours after placement)

Supported Lodgings ExTra Beds



Back Page

Please contact ros.arscott@youngdevon.org if you require any further information.



Young Devon Central Office,
10 Erme Road, Ivybridge, Devon PL21 0AB

Telephone: **01752 691 511** | www.youngdevon.org

Twitter: **@youngdevon** | Facebook: **/youngdevonofficial**

Instagram: **youngdevonofficial**